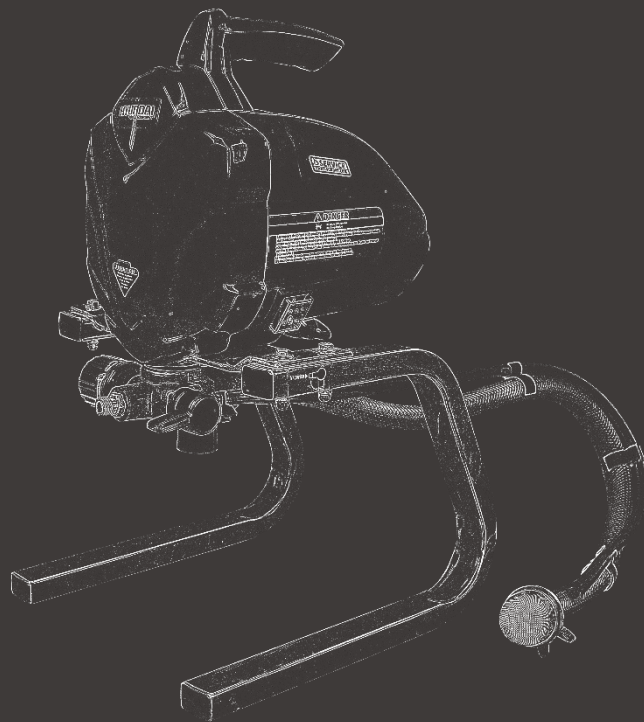


HYUNDAI
POWER PRODUCTS

HIGH PRESSURE PAINTING UNIT

HSP200

ORIGINAL INSTRUCTIONS



CONTENTES

1. SAFETY INSTRUCTIONS	3
2. YOUR PRODUCT	7
3. USE	9
4. CARE AND MAINTENANCE	12
5. TROUBLESHOOTING	13
6. EXPLODED VIEW	14
7. DECLARATION OF CONFORMITY CE	17
8. DISPOSAL	18

1. SAFETY INSTRUCTIONS

- Read these instructions carefully. Be familiar with the controls and proper use of the equipment.
- Never allow children use this machine. If you give or lend this machine, also provide this manual to the third person. Furthermore, make sure that this person uses this device only after having received the necessary instructions.
- Local laws can restrict the age of the user. Children should not use this tool.
- The operator or user is responsible for accidents or risks that may occur to other persons or their properties.
- Always wear protective equipment: gloves, safety glasses, mask.
- Before using the machine, inspect it. In case of problems, do not use the machine and have it inspected/repared by a qualified technician.
- Do not use the machine in a confined space where dangerous carbon monoxide emissions can be collected.
- Do not spray flammable or combustible materials near a flame or source of ignition, such as cigarettes, engines and electrical equipment.
- Do not use flammable liquids with the tool; only water-based fluids should be used.
- For units only used to spray water-based material or mineral spirits with a flashpoint of 21°C (69.8F°).
- Do not spray or clean with liquids having a flashpoint less than 21°C (69. 8F°).
- Paint or solvent flowing through the equipment can create static electricity. Static electricity poses a risk of fire or explosion in the presence of paint or solvent vapours. All the parts of the spraying system, including pump, hose assembly, spray gun and objects in and around the spraying area should be properly grounded for protection against static discharges and sparks. Use only the paint spraying hoses specified by the manufacturer, without high-pressure air conductors or grounded.
- Check that all containers and collection systems are grounded to prevent static electricity discharge.
- Connect to a grounded socket and use only grounded extension cords.
- Do not use paint or solvents containing halogenated hydrocarbons. Refer to the operating instructions for examples of these types of materials.
- Keep the spraying area well-ventilated. Keep the assembly of the pump in a well-ventilated area. Do not spray the assembly of the pump.
- Do not smoke in spraying area. Do not use switches, engines or similar products with sparks in the spraying area.
- Keep the area clear and free from containers of paint or solvents, rags, and other flammable objects.
- You need to know the content of the paints and solvents you are spraying. Read all Materials Safety Data Sheets (MSDS) and the labels of the containers provided with paints and solvents. Observe the safety instructions of the paint and solvent manufacturer.
- Fire-fighting equipment should be available and in good operating condition.
- Do not aim the gun or spray at another person or animal.
- Keep hands and other body parts away from the discharge. For instance, do not

try to stop leaks with any part of the body.

- Always use the nozzle tip protection. Do not spray without the nozzle protectors in place.
- Use only the nozzle tips specified by the manufacturer.
- Be careful when cleaning and changing nozzle tips. In case the nozzle tip jams during spraying, follow the manufacturer's instructions to turn off the unit and release the pressure before removing the nozzle tip to clean it.
- Do not leave the unit powered or under pressure when it is not monitored. When the unit is not in use, turn it off and release the pressure according to the manufacturer's instructions.
- The high-pressure spray can inject toxins into the body and cause serious injuries. In case of injection, seek medical assistance immediately.
- Check the hose and parts for signs of damage. Replace the damaged hoses and parts.
- This system is capable of producing 20.7Mpa. Use only spare parts or accessories that are specified by the manufacturer and classified at a minimum of 22.8 MPa.
- Always engage the trigger lock when not spraying. Check that the trigger lock is working properly.
- Make sure all connections are fixed before using the unit.
- You need to know how to stop the unit and quickly reduce pressure. You should be completely familiar with the controls.
- WARNING - To reduce the risk of injury.
- Always wear appropriate gloves, eye protection and a respirator or mask when painting.
- Do not use or spray near children. Always keep children out of reach of the equipment.
- Do not work on unbalanced or unstable surfaces. Maintain your stability and balance at all times.
- Stay alert and watch what you do.
- Do not operate this unit when you are tired or under the influence of alcohol or drugs.
- Do not tie or hook the hose.
- Do not expose the hose to excessive temperature or pressures compared to those specified by the manufacturer.
- Do not use the hose as a support component to lift or pull the equipment.
- You should be aware of the hazards of the material you are spraying and consult the markings on the container or information provided by the manufacturer of the material you are spraying, including the conditions for the use of personal protective equipment.
- Do not spray materials when you are aware of the risk.
- Do not exceed the lowest operating pressure or maximum temperature indicated on the system components. Read the technical data in all equipment manuals.
- Use fluids or solvents compatible with the wet parts of the equipment. Read the technical data in all equipment manuals. Read the manufacturer's warnings on fluids and solvents. For complete information about your materials, request the MSDS to the distributor or retailer.
- Check the equipment every day. Repair or replace worn or damaged parts

- immediately with factory spare parts only.
- Do not disassemble or modify the unit.
 - Use this equipment only for its intended use. Call your distributor for additional information.
 - Direct hoses and cables away from moving areas, sharp corners, moving parts and hot surfaces.
 - Comply with all applicable safety regulations.
 - Keep children and animals away from the working area.
 - Do not operate this unit when you are tired or under the influence of alcohol or drugs.
 - Do not use trichloroethane, ethylene chloride and other solvents with halogenated hydrocarbon or fluids containing these solvents in pressurized aluminium equipment. Such use could cause severe chemical reactions and equipment failure, resulting in death, serious injury and property damage.

Intended use

This machine is a high-pressure paint pump. It can be used for wall painting, antiseptic painting on steel indoors or outdoors.

Compatible paints: phenol-aldehyde paints, nitrile paints, alkyd paints, epoxy resin paints, oxidized rubber paints, latex paints and water-soluble paints. The paint should be stored in a shady and dry place.

The maximum pressure of the air hose is 22.8Mpa, normal pressure is 20.7Mpa

Symbols



Warning symbol



Caution! Hot Surface



Caution! Risk of explosion. Work only in well-ventilated areas



Caution! Risk of injury and ingestion. Do not spray directly on parts of the body



Read the instructions



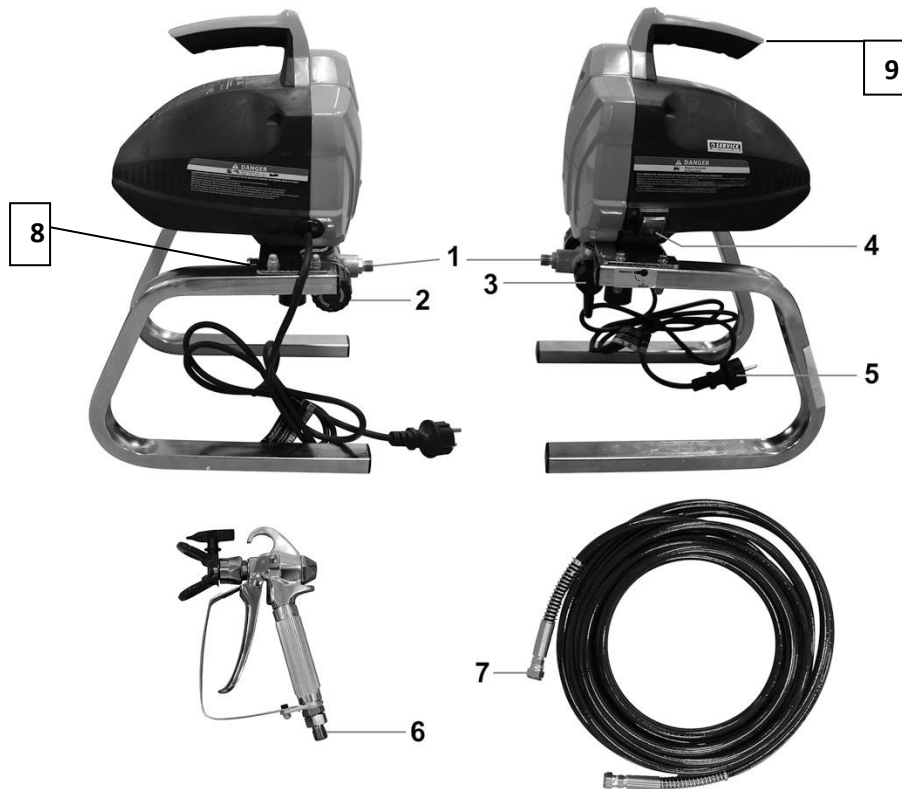
Wear an eye protection



Wear a protective mask

2. YOUR PRODUCT

a. Description of the unit

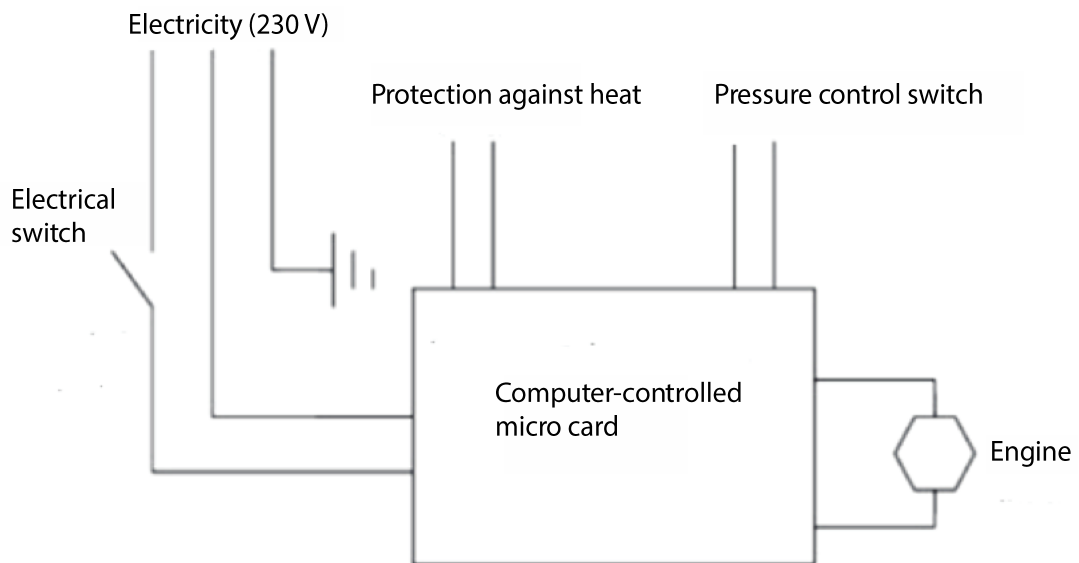


- 1- Connection of the high-pressure hose
- 2- Pressure release lever
- 3- Pressure control
- 4- ON/OFF switch
- 5- Power cable
- 6- High-pressure gun
- 7- High-pressure hose
- 8- Connecting the paint supply
- 9- Carrying handle

b. Technical specifications

Voltage and frequency	230V~ 50Hz
Power	650-700W
Operational Intensity	2.0-4.0A
Maximum operating pressure	20.7mPa
Maximum flow rate (LpM)	1.44 L/min
Standard nozzle	Φ 0.43mm (517)
Paint flow connector	1/4-18NPSM
Maximum pressure/length of the hose	22.8Mpa/7.6m
Weight	7.5 kg
Max temperature	40°C
Sound pressure level	LpA=89dB(A) left LpA=87dB(A) d
Sound power level	LwA=90.82dB(A)

c. Electrical circuit



3. USE

NOTE: the machine should always be switched off and unplugged before assembly.

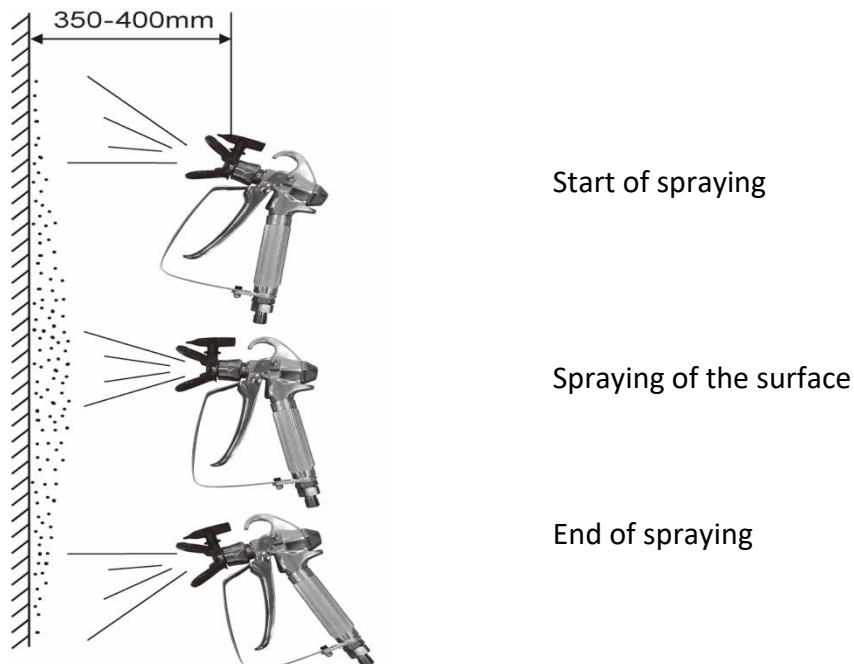
a. Assembly

- Remove the plastic red hose.
- Install and screw one end of the high-pressure hose onto the hose connector.
- Connect and screw the gun to the other end of the hose.
- Use a wrench (not provided) to tighten these two connections.
- If the equipment has just been used, release the pressure and fasten the trigger lock with a pencil or similar object.
- Install your paint device at the inlet of the paint supply.

NOTE: If the protection and nozzle and protection are not installed on the gun, please mount them and screw the protection on the gun and then insert and press the nozzle in the protection.

b. Spraying

- Connect the machine to a suitable outlet
- Make sure that the nozzle in the protection is properly oriented.
- Turn on the device.
- Hold the gun perpendicularly and about 12 inches (30 cm) from the surface to be sprayed. Always keep this position during the operation.
- First test the spray in a small area.
- First move the gun, then pull the gun trigger to spray.
- Slowly increase the pump pressure until the surface is uniform.



c. Spray alignment

- Release the pressure and turn off the device.
- Align the protection horizontally to spray a horizontal pattern.
- Align the protection vertically to spray a vertical pattern
- After each alignment, tighten the protection nut again.

d. Operating instructions

- The paint tank should be filled at least at $\frac{3}{4}$.
- Move the gun before pulling the trigger. Move the gun evenly when spraying.
- If you stop or pause, release the trigger and stop the movement immediately.
- Adjust the movement speed according to the thickness of the paint, the spray pressure and distance between the gun and the object.
- To obtain an intact and smooth surface, spray from a specific level and vertically. The spraying duration depends on the type of paint.
- Spray a second coat when the first is already dry.

Note: During the operation, if you need to stop for several minutes, release the pressure (switch facing down), then turn off the machine.

e. Cleaning the gun

- When the spray nozzle is blocked, rotate it 180° several times and then return it to the spraying position.
- Place the nozzle in the cleaning position.
- Stop the machine and release the pressure.



Spraying position

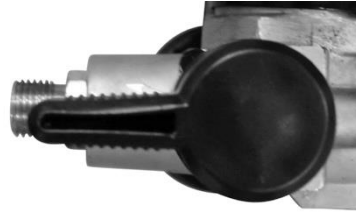
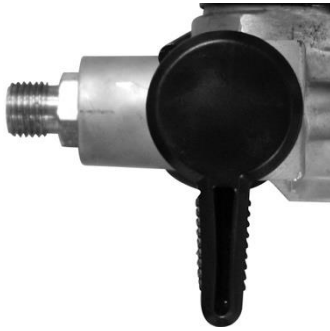


Cleaning position

f. Pressure release

When you need to release the pressure, proceed as follows:

- Release the gun trigger and turn off the machine.
- Position the pressure lever in vertical position (the lever should be positioned downwards).
- Pull the gun trigger to release the pressure (do this by placing the gun in a container).
- Return the lever to the horizontal position



4. CARE AND MAINTENANCE

Maintain your machine regularly. A well-maintained machine provides a consistently high-quality work and extends the life of the machine.

Before any servicing or maintenance, switch off and disconnect the tool.

a. Cleaning

- Thoroughly clean equipment and accessories after use.
- Roll the tube after cleaning in case of damage.
- Add lubricant if you have not used the machine for a long time.
- Wipe the sprayer with a clean cloth, store in a clean, dry place out of the reach of children.

b. Maintenance

An overlayer may form in the air passages. Remove all layers and residues in the air passages and openings within the housing each time you perform maintenance on the sprayer.

Do not use the pump without the engine casing in place. Replace if damaged. The engine casing directs cooling air around the engine to prevent overheating and isolate the control plate from potential electroshock.

Protect the internal drive parts of this sprayer from water. The openings in the protection allow air to cool the inner mechanical and electronic parts. If water is present in these openings, the sprayer may malfunction and suffer permanent damage.

Avoid corrosion of the pump and frost damage. Never leave water or water-based paint in the pump when it is not used in cold water. Freezing liquids can cause serious damage to the sprayer. Store the sprayer with the pump armour to protect the sprayer during storage.

Store the machine in a cool, clean place, away from water and moisture. Keep the machine out of the reach of children.

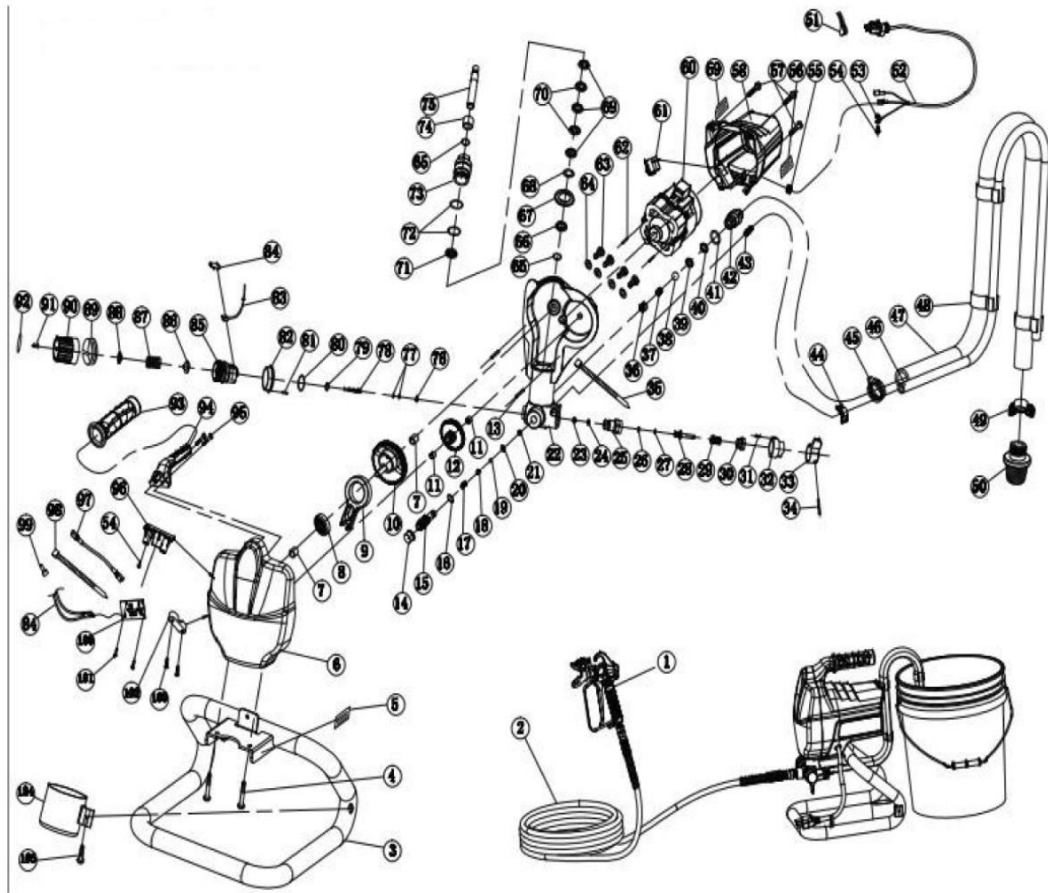
All repair and inspection should be performed by a skilled service. Keep all screws, nuts, washers, gaskets and electrical installations removed during repair procedures. These parts are not usually supplied with repair kits.

5. Troubleshooting

The table below can help solving a problem encountered. If this table does not solve your problem, please do not use the machine and contact your technical service for assistance.

PROBLEMS	POSSIBLE CAUSES	SOLUTIONS
Pressure	Adjustment with the pressure control knob. The engine does not work if it is set to minimum (fully counter clockwise).	Slowly increase the pressure to see if the engine starts
	The nozzle of the sprayer or gun is blocked.	Release the pressure, then remove the blockage or clean the gun filter.
Mechanical	Frozen pump or hardened paint	Thaw the sprayer if water or water-based paint has frozen in the sprayer. If there is hardened (dried) paint in the sprayer, replace the pump packaging.
	Moving the pump connection rod. The pin should be fully pressed into the connection rod and the retaining spring should be firmly in the groove or in the pump pin.	Push the pin into place and secure with the retaining spring.
	The fan does not work	Replace the engine if the fan does not rotate.

6. EXPLODED VIEW



Num	Description	Amount	Num	Description	Amount	Num	Description	Amount
1	High-pressure spraying gun	I	37	Paint inlet spring	I	73	Insert	1
2	High pressure of the fluid hose	I	38	Ball Stell Dw=12.7	I	74	Copper guiding bush	1
3	Bottom frame	I	39	Paint inlet	I	75	Piston	1
4	Screw M6*14	2	40	Paint inlet	I	76	Locking sleeve	1
5	Pressure relief valve label	I	41	Sealing ring (17*1.8)	I	77	White joint	2
6	Protection of the pump casing	I	42	Input adapter	I	78	Pressure control pin	1
7	Output device ring	2	43	Own adapter	I	79	Sealing ring (8,8*1,9)	1
8	Ball bearing	I	44	Small hook	I	80	Sealing ring (27*2,4)	1
9	Output pole	I	45	big hook ((15-25)	I	81	Screw M3*10	1
10	Assembly of the clutch	I	46	own hose	I	82	Protection of the pressure seal	1
11	Middle device ring	2	47	Paint inlet hose	I	83	Micro switch	1
12	Assembly of the exterior assembly	I	48	HOOK		84	Micro switch protection	1
13	Pin 5*10	2	49	Inlet hose locking ring	I	85	Pressure control pin	1
14	Threaded rubber for the screw	I	50	Assembly of the filtration spot	I	86	Spring support	1
15	Paint outlet spot	I	51	Wire label	I	87	Spring for pressure control	1
16	Sealing ring (10*1.8)	I	52	Attachment socket	I	88	Stell plug	1
17	OUTPUT SPRING	I	53	Washer d=4,3	I	89	Pressure control label	1
18	Chuck	I	54	Screw M4*14		90	Adjustable sleeve	1
19	Ball Stell Dw=6.4	I	55	Power supply spot	I	91	Pressure control bolt	1
20	Joint spot	I	56	Warning label	I	92	Label	1
21	Output button	I	57	Screw M6*10		93	Rubber grip	1
22	Pump body	I	58	Box	I	94	Handle	1
23	plastic washer	I	59	Warning label	I	95	Screw M6*30	2

ORIGINAL INSTRUCTIONS

24	Insert block	I	60	Engine assembly	I	96	PCB support	1
25	Spot block	I	61	Power switch	2	97	Connection wire	1
26	Plastic ring	I	62	Pin 3*12	1	98	Nylon rope	1
27	Sealing ring (5*1.8)	I	63	Screw M 5*14	4	99	Thread	1
28	Pressure release pole	I	64	Spring washer	4	100	PCB assembly	1
29	Pressure release spring	I	65	Sealing ring 12,5*2,65)	2			1
30	Spring spot	I	66	Brush stopper	1			1
31	Pin 3*8	I	67	Position washer	1			1
32	Switch spot	I	68	Corrugated washer	1	101	Screws ST3.5*13F	2
33	Control switch (black)	I	69	White ring	3	102	Power cord connection	1
34	Pin	I	70	Black joint	2	103	Screw M4*20	2
35	Nylon rope	I	71	Copper washer	1	104	Plastic cap	1
36	Spring support for the paint inlet	I	72	Sealing ring (22,5*1,8)	2	105	Screw M5*20	1

7. DECLARATION OF CONFORMITY CE

BUILDER

32, rue Aristide Bergès –Z1 31270 Cugnaux - France
Tel: +33 (0)5.34.508.508 Fax : +33 (0)5.34.508.509

Declares that the machinery designated below:

High-pressure paint pump
Model: BDSP200
Serial number: From xxxxxxxxxxx to XXXXXXXX

**Complies with the provisions of the Directive "machinery" 2006/42/EC and regulations
National transposing it;**

Also complies with the following European directives:

EMC Directive 2014/30/EU
RoHS Directive 2011/65/EU

**Also complies with European standards, national standards and provisions following
techniques:**

EN 12621:2006+A1:2010
EN 60204:2006+A1:2009
EN 55014-1:2006+A1:2009+A2:2011
EN 55014-2:2015
EN61000-3-2 :2014
EN61000-3-3:2013



Philippe MARIE / CEO

Cugnaux, 20/11/2018

Responsible of the Technical file: M. Olivier Patriarca

8. DISPOSAL



Selective collection of electrical and electronic equipment waste.

Electrical products should not be disposed of with household products. According to the European Directive 2012/19/UE for electrical and electronic equipment waste and its implementation in national law, used electrical products should be collected separately and disposed of at collection points provided for this purpose. Consult with your local authorities or your dealer for advice on recycling.

HYUNDAI
POWER PRODUCTS

Pour toute demande, contactez-nous :

BUILDER SAS

32, rue Aristide Bergès Z1 31270 Cugnaux, France

Tél. : +33 (0) 5.34.502.502 Fax : +33 (0) 5.34.502.503

<http://www.hyundai-power-fr.com/>

Fabriqué en République Populaire de Chine (PRC)